

## **Section 4.2: Changes in Living Arrangements of Adults 65 and Over**

---

**Changing Conditions on the Olympic and Kitsap Peninsulas: 1990-2000**  
September 2004

Annabel R. Kirschner, Professor and Chair, and Julie Steinkopf Rice, Research Assistant  
Department of Community and Rural Sociology, Washington State University,  
Pullman, WA

Supported by a grant from the Olympic Natural Resources Center, the Port of Bremerton  
and Kitsap County

## Section 4.2

### Changes in Living Arrangements of Adults 65 and Over

#### Introduction

Prior sections of this report documented the aging of the population that occurred on the Olympic Peninsula over the past decade. One concern accompanying this is living arrangements for older adults.

Most older adults prefer to live in their own home as long as possible. Providing programs that help this happen is particularly important with the rapid growth of the 65 and over population. These programs are particularly important for older women. Men 65 and over are more likely than women in this age group to be married and living with their spouse<sup>1</sup>. Because women have longer life expectancies than men and tend to marry men who are two to four years older, with increasing age the proportions of women who are widowed rise rapidly. Many older women who are currently living alone may be on their own for the first time ever. Women who were 65 and over in 2000 were born in 1935 or earlier. At that time, many women lived with their family or with relatives until they married. For some, the transition to living alone may be quite smooth. However, others may appreciate assistance in a variety of areas such as home maintenance, financial planning, advice on income tax preparation, etc. Table 4.2 on pages 11 to 13 looks at trends in the number and percent of men and women 65 years and older living alone and in group quarters. The maps on pages 9 to 10 show variation at the census tract level on these variables.

---

<sup>1</sup> U.S. Bureau of the Census report, "The Older Population in the United States: March 2002", P20-546.

## **Clallam County**

The percent of males 65 and over living alone in Clallam County increased slightly during the last ten years, from 14.2% in 1990 to 15.5% in 2000. This percentage continued to be slightly lower than the state's average of 16.7% in 2000. A total of 958 men 65 and over were living alone in 2000 in the county. When viewed at the sub-county level, distinct patterns emerge in the distribution of these men. The areas of Neah Bay, East of Neah Bay, and Forks all have rates substantially higher than the county's, at 22.6%, 25.6%, and 23.9%, respectively for 2000. In contrast, the areas of Crescent Lake, Port Angeles, and Sequim have rates consistent with the county's overall rate, with rates for 2000 between 13.6% and 15.8%.

The percent of women over 65 living alone in Clallam County was much higher than for men and increased slightly from 33.4% in 1990 to 35.5%, bringing the total number to 2,674—nearly 3 times as many women lived alone as men—in 2000. This rate continued to be slightly lower than the state's rate of 36.3% for 2000. At the sub-county level nearly all areas experienced an increase in older women living alone. The areas of Port Angeles, Forks, and Neah Bay all experienced higher rates than the county for 2000, at 38.8%, 35.9%, and 40%, respectively.

Only a small percent of adults 65 and over lived in group quarters and this decreased from 3.9% in 1990 to 2.5% in 2000. This drop was due to a decline of 107 adults in this category, bringing the total number in 2000 to just 341. All sub-county areas experienced a decreasing percent, with the largest drop occurring in the Port Angeles area. In 2000 this area had 97 adults in this category, a decrease of 94 adults since 1990.

## **Grays Harbor County**

Of all the counties on the Olympic Peninsula, Grays Harbor had the highest percent of men 65 and over living alone in 2000, increasing slightly from 19.4% in 1990 to 19.9%—this was somewhat higher than the state’s average of 16.7% for 2000. At the sub-county level, both the Aberdeen and Hoquiam areas had rates for 2000 exceeding the county’s rate. In the Aberdeen area, rates ranged from 19.9% to 36.5%. In the Hoquiam area, rates were between 21.2% and 30.9%. The high rates for both these areas persisted despite slight decreases in the number of men in this category. The lowest rates occurred in the Southeast/Oakville area, at 11.5% for 2000.

The likelihood of women 65 and over living alone in 2000 in Grays Harbor was much higher than for men and increased slightly from 37.9% in 1990 to 38.5% in 2000. This was the highest rate on the Olympic Peninsula for 2000, and was somewhat higher than the state’s rate of 36.3% in 2000. A total of 2,197 older women lived alone in Grays Harbor in 2000, more than twice the number of men. At the sub-county level, the areas of Aberdeen and Hoquiam had the highest rates of women in this category. In the Aberdeen area, rates ranged between 37% and 50% for 2000, although many areas experienced a slight decrease since 1990. In the Hoquiam area, the percent of older women living alone increased slightly since 1990, with rates for 2000 ranging between 39.6% and 54.5%, the highest in the county. The South Shore/Westport and Montesano areas also had high rates in 2000, at 41.6% and 41%, respectively.

The percent of adults 65 years and over living in group quarters in the county was quite small and decreased by over two percentage points since 1990, from 5.7% to 3.4%. This was a decrease of 227 adults in this category. This decrease also brought Grays

Harbor's rate somewhat below the state's rate of 5.3% for 2000. The greatest decreases at the sub-county level occurred in a section of Aberdeen, where this population dropped from 82 adults in 1990 to zero in 2000. The Elma area also experienced a dramatic decrease, dropping from 141 adults in 1990 to 17 in 2000. These declines may be due to the closure of nursing homes in those areas.

### **Jefferson County**

The percent of men 65 years and over living alone in Jefferson County increased slightly from 15.1% in 1990 to 16.4% in 2000—just below the state's average of 16.7% in 2000. At the sub-county level, the greatest increase occurred in the Port Townsend area, where the percent of older men living alone increased from 18.2% to 23% during the past decade.

The percent of women over the age of 65 living alone in Jefferson County was about twice that for men and increased slightly from 31.9% in 1990 to 32.9% in 2000. This percent in 2000 was below the state's average of 36.3%. The total number of older women living alone in the county in 2000 was 925, an increase of 227 since 1990. At the sub-county level, the highest percents for 2000 occurred in the West End area, at 40%, and the Port Townsend area, at 46.6%. The greatest rate of increase occurred in the Discovery Bay area, where these numbers grew by 79.3% since 1990, or from 87 women in 1990 to 156 in 2000.

The percent of adults 65 years and over living in group quarters in Jefferson County was quite low and decreased slightly during the decade, from 2.1% in 1990 to 1.8% in 2000. This rate was well below the state's rate (5.3% in 2000) and was the lowest on the Olympic Peninsula when compared to other counties. In 2000, a total of 100 adults

over the age of 65 lived in group quarters in the county. At the sub-county level, 97 of these adults lived in the Port Townsend area, a slight increase since 1990.

### **Kitsap County**

The percent of men 65 years and over living alone in Kitsap County increased slightly since 1990, from 14.6% to 16.3% in 2000—slightly below the state’s average of 16.7% in 2000. At the sub-county level the highest percents occurred in the Bremerton area, where between 16.4% and 39.7% of older men lived alone in 2000. The Parkwood area and a section of Port Orchard also experienced high percents of older men living alone, at 20.6% and 26.4%, respectively.

The percent of women 65 and over living alone decreased slightly over the past decade in Kitsap County, dropping from 36.7% in 1990 to 34.8% in 2000, but was still more than twice as high as for men. In addition, the number of women increased by 594, bringing the total number of women in this category in 2000 to 4,879. For comparison, the state’s average in 2000 was 36.3%. At the sub-county level the highest incidences of women living alone occurred in the Bremerton area, where percents ranged between 34.3% to 61.2%. In several areas both the percent and number of women living alone decreased. A section of Bainbridge Island also had high percents, at 54.5% in 2000. Other areas with high percents in 2000 included a section of Silverdale, at 53.3%, and the Parkwood area, at 43%.

The percent of adults 65 years and over living in group quarters decreased slightly since 1990, dropping from 6.3% in 1990 to 5.9% in 2000. This was slightly above the state’s average of 5.3% for 2000, and was also the highest percent compared to the other counties on the Olympic Peninsula. At the sub-county level the distribution of adults in

this category tended to be highly concentrated in certain census tracts while the remaining census tracts had few or no persons in this category. The highest percents for 2000 occurred in the Port Orchard/Parkwood area, at 31.6%, and a section of Silverdale, at 24.8%. A section of Bremerton also experienced high rates, at 21.1%. The high rates in certain areas of the county indicate the presence of nursing homes and care facilities that are not available in the adjacent counties such as Jefferson and Mason.

### **Mason County**

The percent of men 65 years and over living alone in Mason County during the past decade increased slightly from 14.6% in 1990 to 15.6% in 2000. The total number of older men living alone in 2000 was 608. The state's average for 2000 was 16.7%. At the sub-county level the highest percents in 2000 occurred in the West and North Canal areas, at 19.3% and 19%, respectively. Rates in the Shelton area also exceeded the county's rate for 2000, ranging between 16.6% and 17.3%.

The percent of women 65 years and over living alone in Mason County decreased by nearly two percentage points, from 31.4% in 1990 to 29.7% in 2000, but was still much higher than that for men. For comparison, the state's rate for older women living alone in 2000 was 36.3%. However, the county experienced a slight numerical increase in the number of older women living alone, increasing by 233 women over the past decade to a total of 1,267 in 2000. At the sub-county level the highest percents in 2000 occurred in the Shelton area, ranging between 36.4% to 45.9%. The North Canal and Allyn-Grapeview areas also experienced high percents in 2000, at 30.1% and 30.6%, respectively.

The percent of adults 65 years and over living in group quarters in Mason County increased slightly from 2.7% in 1990 to 3.5% in 2000. This was well below the state's average for 2000, at 5.3%. The number of adults in this category increased by 117 to a total of 286 in 2000. The older adults living in group quarters were concentrated in a section of Shelton.

### **Pacific County**

Pacific County had one of the highest rates of men 65 years and over living alone in 2000 on the Olympic Peninsula and this increased two percentage points from 17.2% in 1990 to 19.2% in 2000. This was above the state's rate for 2000 of 16.7%. All sub-county level areas experienced increases. The Long Beach City area had the highest percent for 2000, at 30.6%.

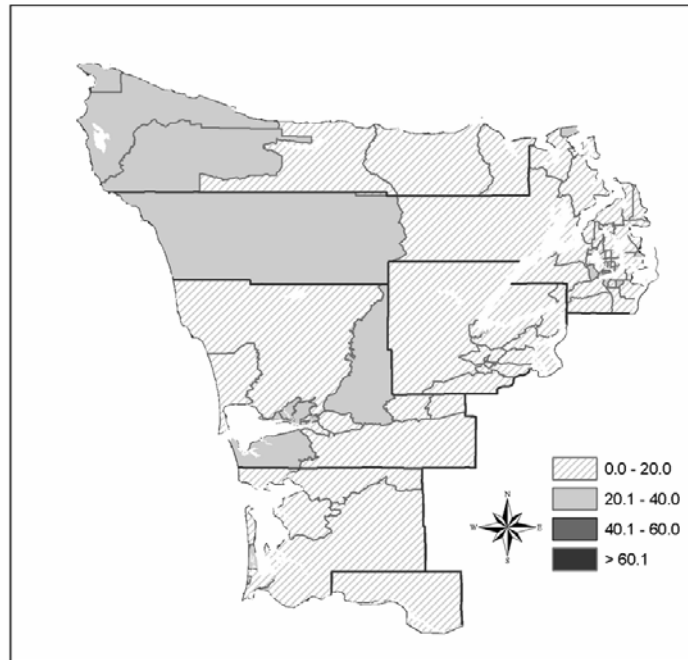
The percent of women 65 years and over living alone in Pacific County decreased slightly over the past decade from 36.6% in 1990 to 34.9% in 2000 but remained well above that for men. In addition, the county experienced a slight numerical increase of 69 women in this category, bringing the total number in 2000 to 875. At the sub-county level, the Raymond area continued to have the highest rate, at 40.3% in 2000. The Long Beach area also had a high rate in 2000, at 35.9%. This was a growth of 63.4%, due to the addition of 45 more women in this category.

The percent of adults 65 years and over living in group quarters was quite low and decreased by one percentage point since 1990, dropping from 3.9% to 2.9%. This was well below the state's rate of 5.3% for 2000. At the sub-county level the adults in this category were concentrated in the Long Beach City and Long Beach areas, and in the Raymond and South Bend areas.

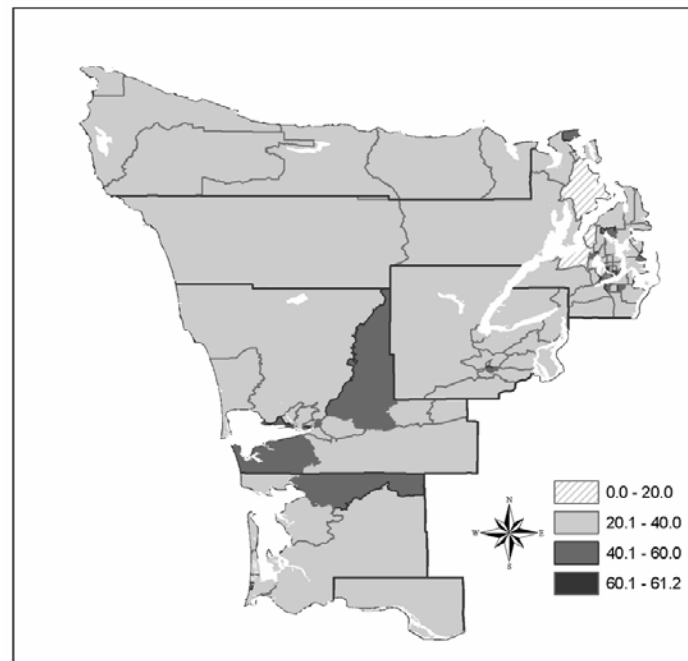
## **Wahkiakum County**

The percent of men 65 years and over living alone in Wahkiakum County increased slightly from 13.2% in 1990 to 15.8%, compared to the state's average of 16.7%. The percent of older women living alone in the county decreased slightly from 31% in 1990 to 29.8% in 2000. However, there was a slight numerical increase of three women, bringing the total number to 112 in 2000. The percent of adults 65 years and over living in group quarters decreased slightly since 1990 by 5 adults, dropping the percentage from 6.8% to 5.5%. A total of 39 older adults were in this category in 2000.

Percent of Males  
65 and Over Living Alone: 2000



Percent of Females  
65 and Over Living Alone: 2000



Percent of Adults 65 and Over  
Living in Group Quarters: 2000

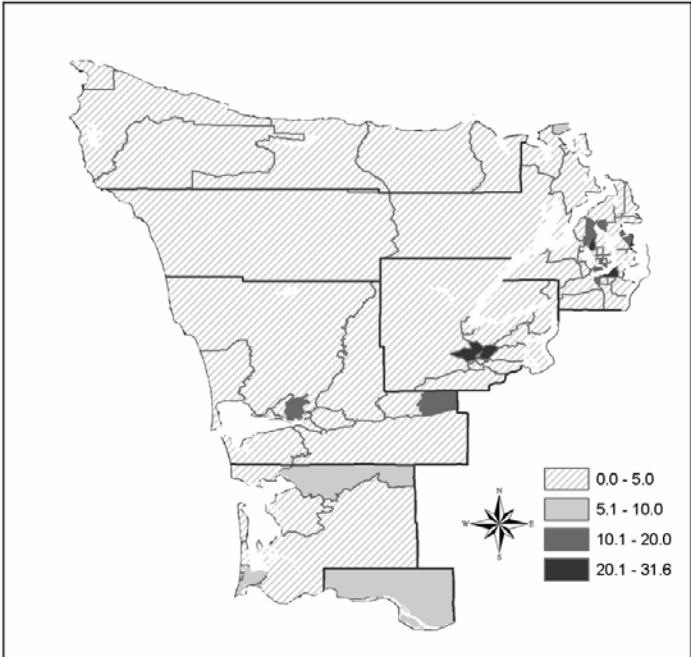


Table 4.2. Living Arrangements of Males and Females 65 and Over

Area	Living Alone: Male 65 and Older						Living Alone: Female 65 and Older						In Group Quarters					
	1990		2000		Change 1990-2000		1990		2000		Change 1990-2000		1990		2000		Change 1990-2000	
	Number	Percent	Number	Percent	Number	Percent	Number	Percent	Number	Percent	Number	Percent	Number	Percent	Number	Percent	Number	Percent
<b>Washington</b>	<b>37,303</b>	<b>15.4</b>	<b>47,032</b>	<b>16.7</b>	<b>9,729</b>	<b>26.1</b>	<b>125,217</b>	<b>37.6</b>	<b>137,892</b>	<b>36.3</b>	<b>12,675</b>	<b>10.1</b>	<b>32,312</b>	<b>5.6</b>	<b>34,919</b>	<b>5.3</b>	<b>2,607</b>	<b>8.1</b>
<b>Clallam</b>	<b>735</b>	<b>14.2</b>	<b>958</b>	<b>15.5</b>	<b>223</b>	<b>30.3</b>	<b>2,117</b>	<b>33.4</b>	<b>2,674</b>	<b>35.5</b>	<b>557</b>	<b>26.3</b>	<b>448</b>	<b>3.9</b>	<b>341</b>	<b>2.5</b>	<b>-107</b>	<b>-23.9</b>
BNA 9801 Neah Bay	5	17.9	7	22.6	2	40.0	19	48.7	14	40.0	-5	-26.3	0	0.0	0	0.0	0	0.0
BNA 9802 East of Neah Bay	8	17.0	20	25.6	12	150.0	13	27.7	20	27.4	7	53.8	1	1.1	0	0.0	-1	-100.0
<sup>C1</sup> BNA 9803 Forks	62	27.9	67	23.9	5	8.1	91	39.6	106	35.9	15	16.5	17	3.8	22	3.8	5	29.4
BNA 9806 Crescent Lake	28	17.9	33	15.3	5	17.9	52	32.3	52	23.5	0	0.0	0	0.0	0	0.0	0	0.0
<sup>C2</sup> BNA 9807 Port Angeles	366	14.4	491	15.8	125	34.2	1,157	35.7	1,504	38.8	347	30.0	191	3.3	97	1.4	-94	-49.2
<sup>C3</sup> BNA 9819 Sequim	266	12.1	340	13.6	74	27.8	785	29.9	978	32.2	193	24.6	239	5.0	222	4.0	-17	-7.1
<b>Grays Harbor</b>	<b>874</b>	<b>19.4</b>	<b>917</b>	<b>19.9</b>	<b>43</b>	<b>4.9</b>	<b>2,160</b>	<b>37.9</b>	<b>2,197</b>	<b>38.5</b>	<b>37</b>	<b>1.7</b>	<b>580</b>	<b>5.7</b>	<b>353</b>	<b>3.4</b>	<b>-227</b>	<b>-39.1</b>
<sup>G1</sup> Tract 1 Quinalt Reservation	34	16.0	40	17.5	6	17.6	59	27.4	57	27.4	-2	-3.4	0	0.0	0	0.0	0	0.0
Tract 2 North Beach/Ocean Shores	65	13.0	109	15.4	44	67.7	173	31.7	241	32.0	68	39.3	1	0.1	0	0.0	-1	-100.0
Tract 4 Montesano	67	17.6	76	20.1	9	13.4	181	39.2	192	41.0	11	6.1	32	3.8	20	2.4	-12	-37.5
Tract 5 Elma	70	18.4	81	20.0	11	15.7	191	37.7	175	38.8	-16	-8.4	141	15.9	17	2.0	-124	-87.9
Tract 6 McCleary	38	18.8	34	16.3	-4	-10.5	85	31.7	89	31.6	4	4.7	69	14.7	72	14.7	3	4.3
Tract 7 Southeast/Oakville	31	17.2	25	11.5	-6	-19.4	58	31.2	70	29.0	12	20.7	0	0.0	0	0.0	0	0.0
Tract 8 Central Park	42	14.5	50	14.7	8	19.0	103	32.2	131	34.0	28	27.2	0	0.0	0	0.0	0	0.0
Tract 9 Aberdeen	64	18.0	68	19.9	4	6.3	200	38.0	174	37.3	-26	-13.0	82	9.3	0	0.0	-82	-100.0
Tract 10 Aberdeen	84	43.3	61	36.5	-23	-27.4	172	57.0	94	50.0	-78	-45.3	1	0.2	6	1.7	5	500.0
Tract 11 Aberdeen	72	18.1	66	19.7	-6	-8.3	245	41.8	191	37.0	-54	-22.0	147	14.9	142	16.7	-5	-3.4
Tract 12 Aberdeen	59	20.0	56	24.1	-3	-5.1	159	41.8	135	45.3	-24	-15.1	0	0.0	0	0.0	0	0.0
Tract 13 Hoquiam	45	17.9	43	21.2	-2	-4.4	103	28.9	141	39.6	38	36.9	105	17.2	96	17.2	-9	-8.6
Tract 14 Hoquiam	30	18.3	33	24.6	3	10.0	59	33.9	69	39.0	10	16.9	0	0.0	0	0.0	0	0.0
Tract 15 Hoquiam	86	30.2	81	30.9	-5	-5.8	222	52.9	225	54.5	3	1.4	0	0.0	0	0.0	0	0.0
Tract 16 South Shore/Westport	87	20.4	94	21.2	7	8.0	150	33.1	213	41.6	63	42.0	2	0.2	0	0.0	-2	-100.0
<b>Jefferson</b>	<b>299</b>	<b>15.1</b>	<b>436</b>	<b>16.4</b>	<b>137</b>	<b>45.8</b>	<b>698</b>	<b>31.9</b>	<b>925</b>	<b>32.9</b>	<b>227</b>	<b>32.5</b>	<b>88</b>	<b>2.1</b>	<b>100</b>	<b>1.8</b>	<b>12</b>	<b>13.6</b>
BNA 9501 West End	6	22.2	6	23.1	0	0.0	7	26.9	10	40.0	3	42.9	0	0.0	0	0.0	0	0.0
<sup>J1</sup> BNA 9502 Quilcene Bay	39	13.8	61	19.2	22	56.4	89	29.6	78	26.8	-11	-12.4	0	0.0	2	0.3	2	100.0
BNA 9503 Port Ludlow	65	14.0	83	11.6	18	27.7	76	18.5	120	19.3	44	57.9	1	0.1	1	0.1	0	0.0
BNA 9504 Marrowstone Island	44	18.5	52	17.1	8	18.2	98	36.4	94	31.4	-4	-4.1	1	0.2	0	0.0	-1	-100.0
BNA 9505 Discovery Bay	39	10.0	64	11.3	25	64.1	87	23.0	156	27.2	69	79.3	13	1.7	0	0.0	-13	-100.0
<sup>J2</sup> BNA 9506 Port Townsend	106	18.2	170	23.0	64	60.4	341	42.6	467	46.6	126	37.0	73	5.3	97	5.6	24	32.9
<b>Kitsap</b>	<b>1,261</b>	<b>14.6</b>	<b>1,717</b>	<b>16.3</b>	<b>456</b>	<b>36.2</b>	<b>4,285</b>	<b>36.7</b>	<b>4,879</b>	<b>34.8</b>	<b>594</b>	<b>13.9</b>	<b>1,274</b>	<b>6.3</b>	<b>1,459</b>	<b>5.9</b>	<b>185</b>	<b>14.5</b>
Tract 801.01 Bremerton	30	26.8	53	28.8	23	76.7	131	62.4	226	61.2	95	72.5	0	0.0	23	4.2	23	100.0
Tract 801.02 Bremerton	35	15.4	42	18.9	7	20.0	125	36.0	160	38.3	35	28.0	87	15.2	110	17.2	23	26.4
Tract 802 Bremerton	35	14.9	47	18.3	12	34.3	125	38.1	124	35.8	-1	-0.8	0	0.0	0	0.0	0	0.0
Tract 803 Bremerton	51	21.4	59	30.1	8	15.7	238	45.2	233	54.2	-5	-2.1	206	26.9	74	11.8	-132	-64.1

Table 4.2 continued

Area	Living Alone: Male 65 and Older						Living Alone: Female 65 and Older						In Group Quarters						
	1990		2000		Change 1990-2000		1990		2000		Change 1990-2000		1990		2000		Change 1990-2000		
	Number	Percent	Number	Percent	Number	Percent	Number	Percent	Number	Percent	Number	Percent	Number	Percent	Number	Percent	Number	Percent	
<i>Kitsap County, continued</i>																			
Tract 804	Bremerton	37	12.7	58	22.0	21	56.8	249	48.0	187	48.6	-62	-24.9	0	0.0	0	0.0	0	0.0
<sup>K1</sup> Tract 805	Bremerton	47	46.1	25	39.7	-22	-46.8	88	55.0	45	47.9	-43	-48.9	1	0.4	2	1.3	1	100.0
Tract 806	Bremerton	55	18.8	55	27.0	0	0.0	167	41.3	127	40.3	-40	-24.0	0	0.0	2	0.4	2	100.0
Tract 807	Bremerton	33	13.0	43	16.4	10	30.3	96	33.1	112	34.3	16	16.7	0	0.0	12	2.0	12	100.0
Tract 808.98	Bremerton	0	0.0	0	0.0	0	0.0	0	0.0	0	0.0	0	0.0	0	0.0	0	0.0	0	0.0
Tract 809.98	Bremerton	42	17.3	63	24.9	21	50.0	109	35.2	124	38.0	15	13.8	0	0.0	0	0.0	0	0.0
Tract 810	Bremerton	49	25.3	40	27.4	-9	-18.4	243	61.8	129	52.4	-114	-46.9	0	0.0	0	0.0	0	0.0
<sup>K2</sup> Tract 811	Bremerton	69	17.2	70	23.9	1	1.4	227	34.7	154	33.3	-73	-32.2	225	21.3	159	21.1	-66	-29.3
<sup>K3</sup> Tract 814	Bremerton	0	0.0	0	0.0	0	0.0	0	0.0	0	0.0	0	0.0	1	100.0	0	0.0	-1	-100.0
Tract 901.01	Port Gamble Reservation	25	12.4	45	14.8	20	80.0	55	24.0	72	24.7	17	30.9	0	0.0	0	0.0	0	0.0
Tract 901.02	Kingston	32	16.6	34	12.6	2	6.3	79	36.1	102	32.9	23	29.1	0	0.0	0	0.0	0	0.0
Tract 902	Port Gamble City	36	12.6	40	10.8	4	11.1	72	25.3	91	22.8	19	26.4	0	0.0	0	0.0	0	0.0
<sup>K4</sup> Tract 903	Bangor Trident Base	0	0.0	0	0.0	0	0.0	0	0.0	0	0.0	0	0.0	0	0.0	0	0.0	0	0.0
Tract 904	Poulsbo	14	12.4	30	14.7	16	114.3	31	25.2	61	20.8	30	96.8	0	0.0	88	17.7	88	100.0
Tract 905	Poulsbo	52	13.7	90	17.8	38	73.1	272	41.1	372	41.6	100	36.8	178	17.1	253	18.1	75	42.1
Tract 906.01	Port Madison Reservation	37	14.5	52	16.9	15	40.5	87	30.3	128	34.6	41	47.1	0	0.0	2	0.3	2	100.0
Tract 906.02	Port Madison Reservation	10	10.8	15	13.6	5	50.0	31	28.7	34	28.8	3	9.7	0	0.0	0	0.0	0	0.0
Tract 907	Bainbridge Island	18	8.1	26	9.8	8	44.4	62	21.8	67	20.7	5	8.1	84	16.6	85	14.4	1	1.2
Tract 908	Bainbridge Island	17	10.1	18	10.1	1	5.9	43	26.7	53	27.6	10	23.3	0	0.0	0	0.0	0	0.0
Tract 909	Bainbridge Island	57	18.1	89	22.3	32	56.1	290	53.4	364	54.5	74	25.5	63	7.3	44	4.1	-19	-30.2
Tract 910	Bainbridge Island	19	8.0	33	12.1	14	73.7	77	31.8	77	26.2	0	0.0	11	2.3	8	1.4	-3	-27.3
Tract 911	Silverdale	33	20.4	38	16.5	5	15.2	69	35.6	54	23.6	-15	-21.7	0	0.0	0	0.0	0	0.0
Tract 912.01	Silverdale	24	23.5	27	21.6	3	12.5	80	53.3	113	53.3	33	41.3	0	0.0	0	0.0	0	0.0
<sup>K5</sup> Tract 912.02	Silverdale	13	10.5	32	10.0	19	146.2	41	26.5	144	25.5	103	251.2	0	0.0	219	24.8	219	100.0
<sup>K6</sup> Tract 913	Central Hood Canal Area	27	11.0	37	11.3	10	37.0	60	23.5	62	18.7	2	3.3	0	0.0	0	0.0	0	0.0
Tract 914	Bremerton	15	8.4	18	9.4	3	20.0	42	22.0	58	25.7	16	38.1	1	0.3	0	0.0	-1	-100.0
Tract 915	Bremerton	7	7.4	22	14.3	15	214.3	37	27.8	56	29.0	19	51.4	0	0.0	2	0.6	2	100.0
Tract 916	Bremerton	6	7.5	25	11.2	19	316.7	24	25.0	79	28.0	55	229.2	0	0.0	0	0.0	0	0.0
Tract 917	Bremerton	15	9.3	31	12.3	16	106.7	71	31.4	92	29.5	21	29.6	0	0.0	0	0.0	0	0.0
Tract 918	Bremerton	21	15.8	20	13.9	-1	-4.8	42	29.2	61	32.4	19	45.2	0	0.0	1	0.3	1	100.0
Tract 919	Tracyton	16	12.9	20	11.8	4	25.0	45	30.6	62	29.1	17	37.8	0	0.0	0	0.0	0	0.0
Tract 920	West of Bremerton	12	12.0	28	16.8	16	133.3	30	27.8	45	23.8	15	50.0	0	0.0	0	0.0	0	0.0
Tract 921	Gorst	33	14.3	40	12.6	7	21.2	89	32.4	82	25.0	-7	-7.9	0	0.0	1	0.2	1	100.0
Tract 922	Port Orchard	38	16.5	67	26.4	29	76.3	149	34.7	203	41.7	54	36.2	174	26.4	139	18.8	-35	-20.1
Tract 923	Port Orchard	23	14.0	37	15.9	14	60.9	77	39.7	106	35.5	29	37.7	0	0.0	3	0.6	3	100.0

Table 4.2 continued

Area	Living Alone: Male 65 and Older						Living Alone: Female 65 and Older						In Group Quarters					
	1990		2000		Change 1990-2000		1990		2000		Change 1990-2000		1990		2000		Change 1990-2000	
	Number	Percent	Number	Percent	Number	Percent	Number	Percent	Number	Percent	Number	Percent	Number	Percent	Number	Percent	Number	Percent
<i>Kitsap County, continued</i>																		
Tract 924 Parkwood	31	17.1	51	20.6	20	64.5	150	49.7	157	43.0	7	4.7	0	0.0	1	0.2	1	100.0
Tract 925 Port Orchard/Parkwood	30	7.9	40	10.3	10	33.3	108	31.0	101	32.0	-7	-6.5	211	29.0	222	31.6	11	5.2
Tract 926 Manchester	27	14.7	28	12.4	1	3.7	77	34.8	85	31.5	8	10.4	0	0.0	0	0.0	0	0.0
Tract 927 Southworth	27	10.8	48	15.7	21	77.8	62	22.1	70	21.6	8	12.9	32	6.0	6	1.0	-26	-81.3
<sup>K7</sup> Tract 928 Southeast corner	32	12.2	46	10.8	14	43.8	81	26.6	127	28.4	46	56.8	0	0.0	3	0.3	3	100.0
<sup>K8</sup> Tract 929 Southeast corner	31	14.5	35	11.1	4	12.9	54	24.8	80	22.9	26	48.1	0	0.0	0	0.0	0	0.0
<b>Mason</b>	<b>440</b>	<b>14.6</b>	<b>608</b>	<b>15.6</b>	<b>168</b>	<b>38.2</b>	<b>1,034</b>	<b>31.4</b>	<b>1,267</b>	<b>29.7</b>	<b>233</b>	<b>22.5</b>	<b>169</b>	<b>2.7</b>	<b>286</b>	<b>3.5</b>	<b>117</b>	<b>69.2</b>
<sup>M1</sup> BNA 9602 West	57	12.1	113	19.3	56	98.2	94	22.0	143	26.4	49	52.1	18	2.0	3	0.3	-15	-83.3
BNA 9603 North Canal	41	14.5	59	19.0	18	43.9	74	27.7	102	30.1	28	37.8	0	0.0	0	0.0	0	0.0
BNA 9604 Allyn-Grapeview	49	13.9	76	15.5	27	55.1	116	30.4	152	30.6	36	31.0	0	0.0	0	0.0	0	0.0
BNA 9605 South Canal	25	9.3	40	10.5	15	60.0	62	24.3	79	21.2	17	27.4	0	0.0	0	0.0	0	0.0
<sup>M2</sup> BNA 9606 Shelton	87	22.4	91	17.3	4	4.6	321	53.7	322	37.5	1	0.3	0	0.0	283	20.4	283	100.0
BNA 9607 Shelton	12	8.8	18	17.0	6	50.0	43	17.6	48	36.4	5	11.6	151	39.6	0	0.0	-151	-100.0
BNA 9609 Shelton	45	22.8	26	17.2	-19	-42.2	106	43.1	117	45.9	11	10.4	0	0.0	0	0.0	0	0.0
BNA 9610 Shelton	23	11.3	51	16.6	28	121.7	55	27.0	69	24.0	14	25.5	0	0.0	0	0.0	0	0.0
BNA 9611 Oakland Bay	57	15.7	58	11.4	1	1.8	78	23.7	100	21.9	22	28.2	0	0.0	0	0.0	0	0.0
BNA 9612 Mason Lake	22	13.7	42	15.2	20	90.9	35	24.5	60	24.0	25	71.4	0	0.0	0	0.0	0	0.0
BNA 9613 South	17	11.0	31	14.8	14	82.4	44	26.8	66	28.3	22	50.0	0	0.0	0	0.0	0	0.0
BNA 9614 Skokomish Reservation	5	14.7	3	8.6	-2	-40.0	6	20.7	9	22.0	3	50.0	0	0.0	0	0.0	0	0.0
<b>Pacific</b>	<b>320</b>	<b>17.2</b>	<b>429</b>	<b>19.2</b>	<b>109</b>	<b>34.1</b>	<b>806</b>	<b>36.6</b>	<b>875</b>	<b>34.9</b>	<b>69</b>	<b>8.6</b>	<b>160</b>	<b>3.9</b>	<b>139</b>	<b>2.9</b>	<b>-21</b>	<b>-13.1</b>
BNA 9502 Raymond	70	18.1	73	19.9	3	4.3	212	42.1	201	40.3	-11	-5.2	69	7.8	59	6.8	-10	-14.5
BNA 9503 South Bend	58	19.0	71	18.0	13	22.4	143	38.9	122	30.3	-21	-14.7	1	0.1	22	2.8	21	2100.0
<sup>P1</sup> BNA 9504 East	47	18.4	51	16.3	4	8.5	97	35.7	97	29.1	0	0.0	0	0.0	0	0.0	0	0.0
BNA 9505 Long Beach	34	18.6	50	18.9	16	47.1	71	34.3	116	35.9	45	63.4	1	0.3	41	7.0	40	4000.0
BNA 9506 Long Beach city	29	21.3	38	30.6	9	31.0	98	41.7	100	51.3	2	2.0	89	24.0	17	5.3	-72	-80.9
BNA 9507 Ocean Park	46	15.1	84	21.6	38	82.6	103	31.9	120	32.3	17	16.5	0	0.0	0	0.0	0	0.0
<sup>P2</sup> BNA 9508 Ocean Park	36	12.3	62	16.3	26	72.2	82	27.8	119	31.3	37	45.1	0	0.0	0	0.0	0	0.0
<b>Wahkiakum</b>	<b>39</b>	<b>13.2</b>	<b>52</b>	<b>15.8</b>	<b>13</b>	<b>33.3</b>	<b>109</b>	<b>31.0</b>	<b>112</b>	<b>29.8</b>	<b>3</b>	<b>2.8</b>	<b>44</b>	<b>6.8</b>	<b>39</b>	<b>5.5</b>	<b>-5</b>	<b>-11.4</b>
BNA 9501	39	13.2	52	15.8	13	33.3	109	31.0	112	29.8	3	2.8	44	6.8	39	5.5	-5	-11.4

Data from U.S. Census tables P023 and P12 STF1 (1990) and P030 and P012 SF1 (2000)