

Section 10: Changes in Commuting

Changing Conditions on the Olympic and Kitsap Peninsulas: 1990-2000

September 2004

Annabel R. Kirschner, Professor and Chair, and Julie Steinkopf Rice, Research Assistant
Department of Community and Rural Sociology, Washington State University,
Pullman, WA

Supported by a grant from the Olympic Natural Resources Center, the Port of
Bremerton, and Kitsap County

Section 10

Changes in Commuting

Commuting Across County Lines

Introduction

With suburbanization and the separation of home from work, commuting has long been part of America's lifestyles. The energy crisis of the early 1970s led some to expect that this pattern would change, but that has not happened. In Washington, as in the United States, there has been an increase in the incidence of commuting across county lines. In 1990, 16.1% of workers commuted to work outside of their county of residence. In 2000, this increased by over two full percentage points, to 18.2%. The continued willingness of families to trade off commuting time for lower home prices, less pollution, and less crime is probably one factor in the growth of counties on the Olympic Peninsula in the 1990s.

This section examines two different patterns of commuting flows at the county level. Table 10.1 shows the number and percent of all workers in Olympic Peninsula counties who lived in one county and worked in another. It also shows the top three destination counties for commuters in both 1990 and 2000. These data are useful for identifying how many people are leaving the county where they reside to work, whether they work in an adjacent county or in another state. But, commuting flows are never one way. So, table 10.2 shows the number and percent of workers who commuted to work into an Olympic Peninsula county. This is useful for identifying how many people are coming into a county to work and whether they reside in an adjacent county or in another state.

Commuting flow data are only available at the county level. However, the second part of this section reports on commuting time to work and these data are available at the census tract level.

Clallam County

Of all the counties on the Olympic Peninsula, Clallam continued to have the lowest percent of workers commuting outside of the county for work. During the last decade the percent of Clallam County's workers crossing county lines increased slightly, from 5.1% in 1990 to 6.4% in 2000. The top three destination counties remained the same over the past ten years, with Jefferson County being the top county for work. A total of 574 workers commuted to Jefferson County, approximately one third of Clallam County's outgoing commuting workforce.

Clallam was the only county on the Peninsula to experience a decline in the number of workers commuting into the county from other areas—down from 842 in 1990 to 819 in 2000. Thus the number of workers commuting into the county was about half the size of those commuting out of the county. Again, the largest number—over half—of incoming workers was from Jefferson County, followed by Kitsap and King counties.

Grays Harbor County

During the past ten years Grays Harbor County experienced a slight increase in the percent of workers commuting outside the county, from 10.3% in 1990 to 12.6% in 2000. Nearly 1,000 more workers commuted out of the county in 2000 than in 1990. The top destination county for work continued to be Thurston County, with nearly half of all Grays Harbor commuters working there—over 600 more than in 1990. The number of commuters to Lewis County decreased and those to Mason County rose only slightly.

However, the number of commuters to Pierce County, while still small, jumped from 103 to 337.

When viewing the number of workers commuting into Grays Harbor for work, Thurston County continued to be the dominant source of commuters accounting for approximately one-third of the incoming commuting workforce, increasing from 683 to 951 in 2000. The number of incoming commuters from Pacific County increased slightly from 505 to 545 in 2000, while the number from Mason County jumped from 226 to 408.

Jefferson County

Between 1990 and 2000, the percent of workers commuting to work outside of Jefferson County increased from 16.7% to 19.9%, an increase of about 900 commuters. Over one third of these workers commuted to Kitsap County, a total of 793 workers in 2000, an increase of 369 workers. The percent of workers commuting to work in Clallam and King counties also increased, by 142 and 209 commuters, respectively.

There was a moderate increase in the number of workers commuting to work into Jefferson County, growing from 947 to 1,212 in 2000. Nearly half came from Clallam County with most of the remainder coming from Kitsap County. The number of commuters from King County, already small in 1990 decreased even further by 2000, down to just 71.

Kitsap County

In Kitsap County, 24,612 commuters left the county for work in 2000—23.0% of the workforce. This was an increase of 10,791 commuters. The percent of the workforce commuting out of the county increased from 15.7% in 1990. The top three destination points for commuters in 2000 continued to be King, Pierce, and Snohomish counties. In

2000, over half of all commuters left Kitsap to work in King County—14,960 workers. The number of workers commuting to Pierce County increased to 5,116, up from 2,960 in 1990. Those commuting to Snohomish County increased by 728 up to 1,258 in 2000.

In contrast to the large increase in the number of out-commuters from Kitsap County, the number of in-commuters from other counties increased slightly from 9,503 in 1990 to 10,261 in 2000. While these workers continued to commute into Kitsap County from Pierce, Mason, and King counties respectively, the number of incoming workers from Pierce and King counties declined over the past decade. Workers commuting from Mason county increased slightly, from 2,315 to 2,744 in 2000, or by 429 workers.

Mason County

In 2000, 8,235 workers commuted to work outside of Mason County, 43.3% of all workers, the second largest percent on the Olympic Peninsula. These workers continued to work in Kitsap, Thurston, Pierce, and King counties. Approximately two-thirds of these workers commuted to Kitsap and Thurston counties, respectively. The rate of increase in commuters going to King County increased the most during the last ten years, with a 131.6% growth rate. In 2000, 5.3% of commuters worked in King County, a total of 1,003 persons.

Interestingly, while Mason County had one of the highest out-commuting rates on the Olympic Peninsula, it also continued to have the second largest number of commuters coming into the county from other places, after Kitsap County. In 1990, 2,209 workers commuted into Mason County, increasing to 3,147 by 2000. In 2000, half of the incoming commuters came from Thurston County—1,597 commuters, a moderate

increase since 1990. The number of commuters coming from Kitsap County nearly doubled to 611 in 2000.

Pacific County

Since 1990 the percent of commuters leaving the county for work increased moderately from 14.1% to 17.4% in 2000. This is a total of 1,376 persons commuting outside of the county for work in 2000. The destinations of these workers continued to be Grays Harbor, Clatsop County in Oregon, and King and Lewis counties in Washington. Approximately one-third of these outgoing commuters worked in Grays Harbor, with those working in Clatsop County, Oregon, close behind. Since 1990 the number of workers commuting to Clatsop County increased notably from 150 to 442. The percent of workers commuting to Lewis County decreased slightly while those commuting to King County increased slightly over the last ten years.

The number of incoming commuters crossing county lines to work in Pacific County increased slightly over the decade, from 629 in 1990 to 837 in 2000. These workers continued to commute from Grays Harbor, Wahkiakum, Clatsop County in Oregon, and Thurston counties. Approximately one third of these workers commuted from Grays Harbor—281 workers in 2000.

Wahkiakum County

In 2000, the highest percent of commuters traveling outside of the county for work for counties on the Olympic Peninsula occurred in Wahkiakum County. At 45.6%, nearly half of the county's workforce left the county for work. This was a 10 percentage point increase since 1990, when 35.8% of workers commuted outside of the county for work. Of these workers, almost half traveled to Cowlitz County in 2000, a total of 318

workers. The other top destination counties continued to be Pacific County and Clatsop County in Oregon. However, the number of workers commuting to Pacific County declined from 184 to 151 in 2000.

Despite the large percent of Wahkiakum County's workforce commuting outside the county for work, the number of workers commuting into the county also increased from 105 in 1990 to 188 in 2000. Over half of these workers continued to come from Cowlitz County, at 100 workers in 2000, followed by Pacific County with 36 workers in 2000.

Commuting Time to Work

Introduction

As discussed in the prior section, many workers on the Olympic Peninsula commute to work. This section examines the portion of workers who spend 40 minutes or more commuting to work at the census tract level.

For workers living in small, isolated communities, employment options are often limited. In particular, workers who are no longer employed in the timber industry due to industrial restructuring and environmental restrictions may seek other employment opportunities with wages as high as those obtained from their timber job. In order to widen these opportunities, workers in situations such as these may choose to look outside their local area for a job and subsequently have long commute times.

Clallam County

The percent of workers commuting 40 minutes or more to work increased during the decade from 8.2% in 1990 to 12.4% in 2000—well below the state’s average of 14.7% and 18.7% respectively in both years. This was the lowest percent for all the counties on the Olympic Peninsula.

Nearly half of all workers with long commuting times in 2000 in the county were located in the Port Angeles area, with 1,345 workers in this category, or 9.5% of all workers in the area. The highest percent of workers with long commuting times in 2000 occurred in the Crescent Lake area, at 23.8% (278 workers) and in the Forks area, at 20% (525 workers).

Grays Harbor County

Grays Harbor County experienced a slight increase in the number and percent of workers commuting 40 minutes or more to work, increasing from 13.4% in 1990 (3,086 workers) to 15.9% in 2000 (4,107 workers). This was somewhat below the state's percent for 2000, at 18.7%.

At the sub-county level, the Southeast/Oakville area had the highest percent of workers with long commutes, at 31.1% in 2000. A quarter of workers living in the Quinalt Reservation area had long commutes in 2000, with 25.7% of workers in this category. Nearly a quarter of all workers in the Elma area had long commuting times in 2000, at 23.2%. This area also had the highest number of workers in this category, at 549.

Jefferson County

Between 1990 and 2000 the percent of workers commuting 40 minutes or more to their jobs increased from 12.9% in 1990 to 18.8% in 2000—a percent comparable to the state's average in 2000 of 18.7%. The number of workers with long commuting times in the county increased from 926 in 1990 to 1,803 in 2000.

At the sub-county level the West End area was the only section of the county that experienced a decrease in the number and percent of workers with long commuting times, dropping from 11.1% (28 workers) in 1990 to 9.1% (17 workers) in 2000. Just over a third of all workers living in the Quilcene Bay area had long commuting times in 2000, with 34.5% of all workers in this category. The Port Ludlow area also had a high percent of workers commuting 40 minutes or more to work in 2000, at 26.1%.

Kitsap County

With one quarter of all the county's workers in 2000 commuting 40 minutes or more to work (25.1%), Kitsap County had one of the highest percents of the counties included in this study. It was also higher than the state's average in 2000, at 18.7%.

Nearly all areas of the county experienced increases in workers with long commuting times. Bainbridge Island had the highest percents of workers with long commuting times, with approximately half of its workers in this category. Percents in 2000 for Bainbridge Island ranged between 48.3% to 52%. The Port Madison Reservation area also had a substantial portion of its workers in this category for 2000, with percents between 31.1% and 41.6%. The areas of Kingston, Port Orchard/Parkwood, and Southworth all had over one-third of its workers commuting 40 minutes or more in 2000, at 40.2%, 38.7%, and 38.7%, respectively.

Mason County

Over one quarter of all workers in Mason County commuted 40 minutes or more to their jobs in 2000, at 27.4%. This was the highest percent in 2000 on the Olympic Peninsula and was well above the state's average for 2000 of 18.7%.

All sub-county areas experienced an increase in both the number and percent of workers in this category. The exception was the Skokomish Reservation area, which experienced a slight decrease over the past decade. The highest percent of workers with long commuting times in 2000 was in the Oakland Bay area, at 42.6%. The South Canal and the West areas also had high percents, at 39% and 36.2%, respectively. The highest number of workers commuting 40 minutes or more to their jobs in 2000 occurred in the Allyn-Grapeview area, with 733 workers in this category.

Pacific County

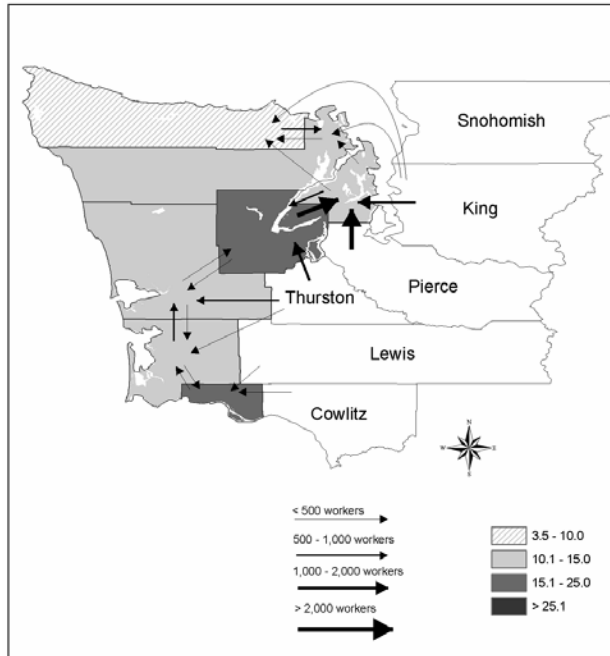
In Pacific County the percent of workers commuting 40 minutes or more to their jobs increased from 8.1% in 1990 to 13.9% in 2000. The number of workers in this category nearly doubled, from 525 in 1990 to 1,036 in 2000. For comparison, the state's average in 2000 was 18.7%.

At the sub-county level the majority of workers with long commuting times in 2000 were located in the Raymond, South Bend, and East areas of the county. Each of these areas experienced modest increases between 1990 and 2000. In 2000, the percent of workers with long commuting times were 18.4% for the Raymond area, 16.7% for the South Bend area, and 19.9% for the East area.

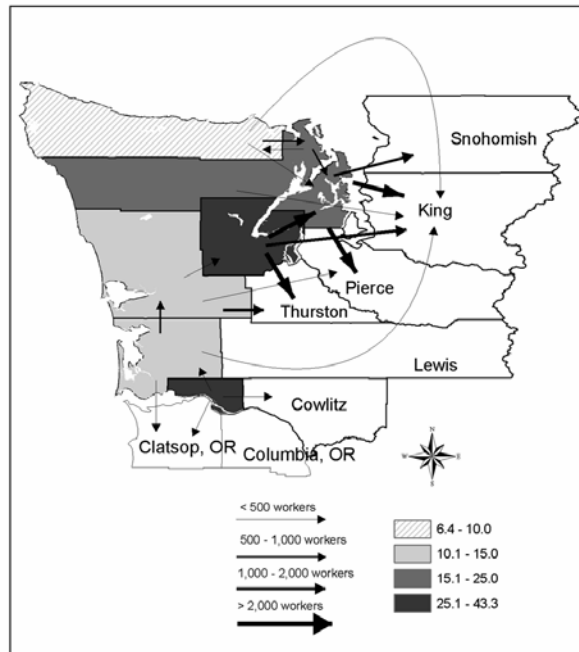
Wahkiakum County

One-quarter of all workers in Wahkiakum County spent 40 minutes or more commuting to their jobs in 1990, at 25.7%, and this increased slightly in 2000 to 26.1%. This was well above the state's average in 2000, at 18.7%. Numerically, 342 workers were in this category for Wahkiakum County in 1990, increasing to 386 in 2000

Percent of Workers Commuting to Work Into County
and Top Three Destination Counties: 2000



Percent of Workers Commuting to Work
Outside of County of Residence
and Top Three Destination Counties: 2000



Percent of Workers 16 and Over with
Commute Times of 40 Minutes or More: 2000

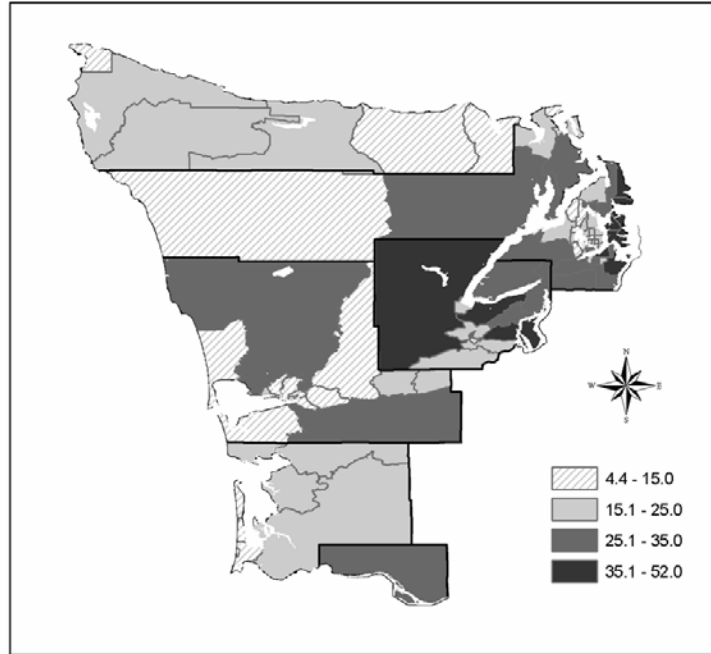


Table 10.1. Commuting to Work into Olympic Peninsula Counties: 1990-2000

Top 3 destination counties are listed unless these changed between 90-00	1990		2000		Change 1990-2000	
	Number	Percent	Number	Percent	Number	Percent
Clallam Co. Place of Work						
Number Worked Inside County	842	4.1	819	3.5	-23	-2.7
<i>Top 3 Counties 1990</i>						
Jefferson	294	1.4	---	---	---	---
King	107	0.5	---	---	---	---
Kitsap	77	0.4	---	---	---	---
<i>Top 3 Counties 2000</i>						
Jefferson	---	---	436	1.9	142	48.3
Kitsap	---	---	100	0.4	23	29.9
King	---	---	61	0.3	-46	-43.0
Grays Harbor Co. Place of Work						
Number Worked Inside County	2145	9.1	2646	10.1	501	23.4
<i>Top 3 Counties 1990</i>						
Thurston	683	2.9	---	---	---	---
Pacific	505	2.1	---	---	---	---
Mason	226	1.0	---	---	---	---
<i>Top 3 Counties 2000</i>						
Thurston	---	---	951	3.6	268	39.2
Pacific	---	---	545	2.1	40	7.9
Mason	---	---	408	1.6	182	80.5
Jefferson Co. Place of Work						
Number Worked Inside County	947	13.1	1212	12.5	265	28.0
<i>Top 3 Counties 1990</i>						
Clallam	432	6.0	---	---	---	---
Kitsap	252	3.5	---	---	---	---
King	79	1.1	---	---	---	---
<i>Top 3 Counties 2000</i>						
Clallam	---	---	574	5.9	142	32.9
Kitsap	---	---	344	3.5	92	36.5
King	---	---	71	0.7	-8	-10.1
Kitsap Co. Place of Work						
Number Worked Inside County	9503	11.3	10261	11.1	758	8.0
<i>Top 3 Counties 1990</i>						
Pierce	3626	4.3	---	---	---	---
Mason	2315	2.8	---	---	---	---
King	1673	2.0	---	---	---	---
<i>Top 3 Counties 2000</i>						
Pierce	---	---	3456	3.7	-170	-4.7
Mason	---	---	2,744	3.0	429	18.5
King	---	---	1,484	1.6	-189	-11.3
Mason Co. Place of Work						
Number Worked Inside County	2209	19.7	3147	22.6	938	42.5
<i>Top 3 Counties 1990</i>						
Thurston	1086	9.7	---	---	---	---
Kitsap	323	2.9	---	---	---	---
Grays Harbor	302	2.7	---	---	---	---
<i>Top 3 Counties 2000</i>						
Thurston	---	---	1,597	11.4	511	47.1
Kitsap	---	---	611	4.4	288	89.2
Grays Harbor	---	---	337	2.4	35	11.6

Table 10.1 continued

Top 3 destination counties are listed unless these changed between 90-00	1990		2000		Change 1990-2000	
	Number	Percent	Number	Percent	Number	Percent
Pacific Co. Place of Work						
Number Worked Inside County	629	9.8	837	11.4	208	33.1
<i>Top 4 Counties 1990</i>						
Grays Harbor	225	3.5	---	---	---	---
Wahkiakum	184	2.9	---	---	---	---
Clatsop OR	63	1.0	---	---	---	---
Thurston	30	0.5				
<i>Top 4 Counties 2000</i>						
Grays Harbor	---	---	281	3.8	56	24.9
Wahkiakum	---	---	151	2.1	-33	-17.9
Thurston	---	---	77	1.0	47	156.7
Clatsop OR	---	---	72	1.0	9	14.3
Wahkiakum Co. Place of Work						
Number Worked Inside County	105	10.1	188	18.4	83	79.0
<i>Top 5 Counties 1990</i>						
Cowlitz	60	5.8	---	---	---	---
Clatsop OR	31	3.0	---	---	---	---
Pacific	6	0.6	---	---	---	---
Pierce	6	0.6	---	---	---	---
Lewis	0	0.0				
<i>Top 5 Counties 2000</i>						
Cowlitz	---	---	100	9.8	40	66.7
Pacific	---	---	36	3.5	30	500.0
Lewis	---	---	15	1.5	15	100.0
Clatsop OR	---	---	7	0.7	-24	-77.4
Pierce	---	---	14	1.4	8	133.3

Data from U.S. Census County-to-County Worker Flow Files, released March 6, 2003

Table 10.2. Commuting to Work Outside of Olympic Peninsula Counties: 1990-2000

Top 3 destination counties are listed unless these changed between 90-00	1990		2000		Change 1990-2000	
	Number	Percent	Number	Percent	Number	Percent
Clallam Co. Place of Residence						
Number Worked Outside County	1056	5.1	1533	6.4	477	45.2
<i>Top 3 Destination Counties 1990</i>						
Jefferson	432	2.1	---	---	---	---
King	171	0.8	---	---	---	---
Kitsap	94	0.5	---	---	---	---
<i>Top 3 Destination Counties 2000</i>						
Jefferson	---	---	574	2.4	142	32.9
King	---	---	261	1.1	90	52.6
Kitsap	---	---	152	0.6	58	61.7
Grays Harbor Co. Place of Residence						
Number Worked Outside County	2468	10.3	3420	12.6	952	38.6
<i>Top 4 Destination Counties 1990</i>						
Thurston	953	4.0	---	---	---	---
Mason	302	1.3	---	---	---	---
Lewis	262	1.1	---	---	---	---
Pierce	103	0.4	---	---	---	---
<i>Top 4 Destination Counties 2000</i>						
Thurston	---	---	1,595	5.9	642	67.4
Pierce	---	---	350	1.3	247	239.8
Mason	---	---	337	1.2	35	11.6
Lewis	---	---	180	0.7	-82	-31.3
Jefferson Co. Place of Residence						
Number Worked Outside County	1260	16.7	2118	19.9	858	68.1
<i>Top 3 Destination Counties 1990</i>						
Kitsap	424	5.6	---	---	---	---
Clallam	294	3.9	---	---	---	---
King	215	2.9	---	---	---	---
<i>Top 3 Destination Counties 2000</i>						
Kitsap	---	---	793	7.5	369	87.0
Clallam	---	---	436	4.1	142	48.3
King	---	---	424	4.0	209	97.2
Kitsap Co. Place of Residence						
Number Worked Outside County	13821	15.7	24612	23.0	10791	78.1
<i>Top 3 Destination Counties 1990</i>						
King	8459	9.6	---	---	---	---
Pierce	2960	3.4	---	---	---	---
Snohomish	530	0.6	---	---	---	---
<i>Top 3 Destination Counties 2000</i>						
King	---	---	14,960	14.0	6,501	76.9
Pierce	---	---	5,116	4.8	2,156	72.8
Snohomish	---	---	1,258	1.2	728	137.4

Table 10.2 continued

Top 3 destination counties are listed unless these changed between 90-00	1990		2000		Change 1990-2000	
	Number	Percent	Number	Percent	Number	Percent
Mason Co. Place of Residence						
Number Worked Outside County	5137	36.3	8235	43.3	3098	60.3
<i>Top 4 Destination Counties 1990</i>						
Kitsap	2315	16.4	---	---	---	---
Thurston	1438	10.2	---	---	---	---
Pierce	522	3.7	---	---	---	---
King	433	3.1	---	---	---	---
<i>Top 4 Destination Counties 2000</i>						
Thurston	---	---	2,841	14.9	1,403	97.6
Kitsap	---	---	2,744	14.4	429	18.5
King	---	---	1,003	5.3	570	131.6
Pierce	---	---	860	4.5	338	64.8
Pacific Co. Place of Residence						
Number Worked Outside County	954	14.1	1376	17.4	422	44.2
<i>Top 4 Destination Counties 1990</i>						
Grays Harbor	505	7.5	---	---	---	---
Clatsop OR	150	2.2	---	---	---	---
Lewis	67	1.0	---	---	---	---
King	61	0.9	---	---	---	---
<i>Top 4 Destination Counties 2000</i>						
Grays Harbor	---	---	545	6.9	40	7.9
Clatsop OR	---	---	442	5.6	292	194.7
King	---	---	88	1.1	27	44.3
Lewis	---	---	66	0.8	-1	-1.5
Wahkiakum Co. Place of Residence						
Number Worked Outside County	524	35.8	699	45.6	175	33.4
<i>Top 3 Destination Counties 1990</i>						
Pacific	184	12.6	---	---	---	---
Cowlitz	174	11.9	---	---	---	---
Clatsop OR	68	4.7	---	---	---	---
<i>Top 3 Destination Counties 2000</i>						
Cowlitz	---	---	318	20.8	144	82.8
Pacific	---	---	151	9.9	-33	-17.9
Clatsop OR	---	---	77	5.0	9	13.2

Data from U.S. Census County-to-County Worker Flow Files, released March 6, 2003

Table 10.3. Workers 16 and Over: Commute Times to Work 40 Minutes or More

Area		1990		2000		Change 1990-2000	
		Number	Percent	Number	Percent	Number	Percent
Washington		324,727	14.7	497,702	18.7	172,975	53.3
Clallam		1,621	8.2	2,820	12.4	1,199	74.0
	BNA 9801 Neah Bay	32	7.5	29	6.5	-3	-9.4
	BNA 9802 East of Neah Bay	83	17.6	76	19.1	-7	-8.4
^{C1}	BNA 9803 Forks	488	17.0	525	20.0	37	7.6
	BNA 9806 Crescent Lake	87	8.9	278	23.8	191	219.5
^{C2}	BNA 9807 Port Angeles	740	6.1	1,345	9.5	605	81.8
^{C3}	BNA 9819 Sequim	191	6.9	567	14.2	376	196.9
Grays Harbor		3,086	13.4	4,107	15.9	1,021	33.1
^{G1}	Tract 1 Quinalt Reservation	316	18.6	475	25.7	159	50.3
	Tract 2 North Beach/Ocean Shores	139	9.5	296	14.5	157	112.9
	Tract 4 Montesano	383	16.5	350	13.3	-33	-8.6
	Tract 5 Elma	433	23.5	549	23.2	116	26.8
	Tract 6 McCleary	211	19.3	228	17.5	17	8.1
	Tract 7 Southeast/Oakville	366	29.6	480	31.1	114	31.1
	Tract 8 Central Park	158	10.1	194	11.3	36	22.8
	Tract 9 Aberdeen	163	8.1	302	12.7	139	85.3
	Tract 10 Aberdeen	188	14.3	133	9.0	-55	-29.3
	Tract 11 Aberdeen	160	9.2	107	7.0	-53	-33.1
	Tract 12 Aberdeen	108	6.8	251	15.7	143	132.4
	Tract 13 Hoquiam	182	12.6	177	12.7	-5	-2.7
	Tract 14 Hoquiam	34	4.5	71	8.6	37	108.8
	Tract 15 Hoquiam	127	9.0	229	15.9	102	80.3
	Tract 16 South Shore/Westport	118	7.9	265	14.7	147	124.6
Jefferson		926	12.9	1,803	18.8	877	94.7
	BNA 9501 West End	28	11.1	17	9.1	-11	-39.3
^{J1}	BNA 9502 Quilcene Bay	210	32.8	328	34.5	118	56.2
	BNA 9503 Port Ludlow	100	9.8	371	26.1	271	271.0
	BNA 9504 Marrowstone Island	170	14.8	256	16.7	86	50.6
	BNA 9505 Discovery Bay	168	11.8	405	20.3	237	141.1
^{J2}	BNA 9506 Port Townsend	250	9.2	426	12.1	176	70.4
Kitsap		15,052	18.3	25,618	25.1	10,566	70.2
	Tract 801.01 Bremerton	81	9.5	183	18.7	102	125.9
	Tract 801.02 Bremerton	87	5.4	436	23.1	349	401.1
	Tract 802 Bremerton	110	7.7	341	22.7	231	210.0
	Tract 803 Bremerton	246	13.5	252	20.8	6	2.4
	Tract 804 Bremerton	176	11.2	411	25.0	235	133.5
^{K1}	Tract 805 Bremerton	116	9.6	273	22.9	157	135.3
	Tract 806 Bremerton	225	10.5	454	20.5	229	101.8
	Tract 807 Bremerton	107	7.7	260	17.0	153	143.0
	Tract 808.98 Bremerton	105	10.0	68	6.3	-37	-35.2
	Tract 809.98 Bremerton	150	9.5	280	15.0	130	86.7
	Tract 810 Bremerton	134	10.0	347	19.8	213	159.0
^{K2}	Tract 811 Bremerton	278	10.6	680	28.0	402	144.6
^{K3}	Tract 814 Bremerton	38	8.7	138	7.9	100	263.2
	Tract 901.01 Port Gamble Reservation	437	33.1	657	32.9	220	50.3
	Tract 901.02 Kingston	410	29.2	837	40.2	427	104.1
	Tract 902 Port Gamble City	431	16.8	820	22.7	389	90.3
^{K4}	Tract 903 Bangor Trident Base	79	4.2	105	4.4	26	32.9
	Tract 904 Poulsbo	102	5.8	273	14.8	171	167.6
	Tract 905 Poulsbo	402	17.0	765	26.1	363	90.3
	Tract 906.01 Port Madison Reservation	496	24.6	755	31.1	259	52.2

Table 10.3 continued

Area		1990		2000		Change 1990-2000	
		Number	Percent	Number	Percent	Number	Percent
<i>Kitsap County, Continued</i>							
Tract 906.02	Port Madison Reservation	272	32.2	584	41.6	312	114.7
Tract 907	Bainbridge Island	780	46.2	944	48.6	164	21.0
Tract 908	Bainbridge Island	654	48.8	872	48.3	218	33.3
Tract 909	Bainbridge Island	851	47.1	1,111	52.0	260	30.6
Tract 910	Bainbridge Island	1,056	48.2	1,346	52.0	290	27.5
Tract 911	Silverdale	140	8.2	395	18.8	255	182.1
Tract 912.01	Silverdale	150	11.1	213	12.5	63	42.0
^{K5} Tract 912.02	Silverdale	236	8.0	822	15.6	586	248.3
^{K6} Tract 913	Central Hood Canal Area	267	9.3	656	16.5	389	145.7
Tract 914	Bremerton	100	7.9	279	17.9	179	179.0
Tract 915	Bremerton	167	10.0	329	18.3	162	97.0
Tract 916	Bremerton	210	8.0	564	17.3	354	168.6
Tract 917	Bremerton	249	8.1	499	15.2	250	100.4
Tract 918	Bremerton	113	8.5	218	16.5	105	92.9
Tract 919	Tracyton	32	2.8	141	9.8	109	340.6
Tract 920	West of Bremerton	317	20.4	589	27.2	272	85.8
Tract 921	Gorst	211	15.9	615	31.9	404	191.5
Tract 922	Port Orchard	298	18.6	568	22.7	270	90.6
Tract 923	Port Orchard	434	21.1	687	29.6	253	58.3
Tract 924	Parkwood	666	25.4	534	19.6	-132	-19.8
Tract 925	Port Orchard/Parkwood	393	24.2	725	38.7	332	84.5
Tract 926	Manchester	696	33.3	769	30.8	73	10.5
Tract 927	Southworth	789	31.8	1,274	38.7	485	61.5
^{K7} Tract 928	Southeast corner	794	22.8	1,267	27.2	473	59.6
^{K8} Tract 929	Southeast corner	967	30.2	1,282	31.7	315	32.6
Mason		2,926	21.6	4,990	27.4	2,064	70.5
^{M1} BNA 9602	West	476	36.1	693	36.2	217	45.6
BNA 9603	North Canal	451	30.4	699	34.3	248	55.0
BNA 9604	Allyn-Grapeview	487	27.1	733	32.7	246	50.5
BNA 9605	South Canal	224	25.8	543	39.0	319	142.4
^{M2} BNA 9606	Shelton	251	13.1	445	16.6	194	77.3
BNA 9607	Shelton	38	6.2	160	25.2	122	321.1
BNA 9609	Shelton	199	14.1	238	14.1	39	19.6
BNA 9610	Shelton	136	10.0	351	19.1	215	158.1
BNA 9611	Oakland Bay	305	27.1	604	42.6	299	98.0
BNA 9612	Mason Lake	232	35.7	265	28.2	33	14.2
BNA 9613	South	87	10.0	227	17.5	140	160.9
BNA 9614	Skokomish Reservation	40	24.5	32	20.8	-8	-20.0
Pacific		525	8.1	1,036	13.9	511	97.3
BNA 9502	Raymond	134	8.7	301	18.4	167	124.6
BNA 9503	South Bend	147	11.3	216	16.7	69	46.9
^{P1} BNA 9504	East	163	12.9	295	19.9	132	81.0
BNA 9505	Long Beach	35	4.2	57	5.7	22	62.9
BNA 9506	Long Beach city	8	1.8	35	7.3	27	337.5
BNA 9507	Ocean Park	25	4.8	58	6.3	33	132.0
^{P2} BNA 9508	Ocean Park	13	2.4	74	11.9	61	469.2
Wahkiakum		342	25.7	386	26.1	44	12.9
BNA 9501		342	25.7	386	26.1	44	12.9

Data from U.S. Census tables P050 STF3 (1990) and P031 SF3 (2000)